



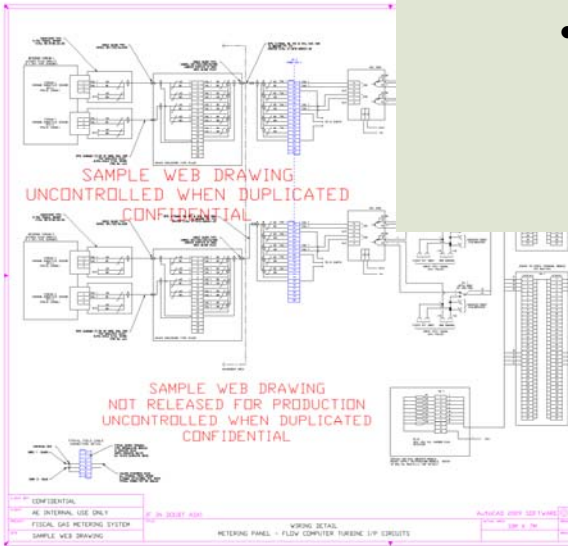
**Consultant  
Engineers**

# Analytical Engineering Limited

**Onshore and Offshore  
Engineering Solutions for the Petroleum Industry and more...**

## Company profile

- About us
- Core business areas & transferable skills
- Clients
- Company mission statement



**Analytical Engineering Ltd**  
**Registered Office**

9 Tubb Close, Bicester  
Oxfordshire, England OX26 2BN  
Registered number 2880198

Tel: +44 (0) 1869 242 392

Tel: 0844 800 9756 (UK only)

Fax: +44 (0) 1869 354 625

e-mail: [design@analyticaleng.com](mailto:design@analyticaleng.com)

© All 3D & 2D CAD drawings, design,  
intellectual property, photographs & other  
graphics are covered by copyright. Copyright  
owned by Mark Citynskyj.  
Limited edition photographic prints available.  
Visit: [ullapoolgirl.com](http://ullapoolgirl.com)

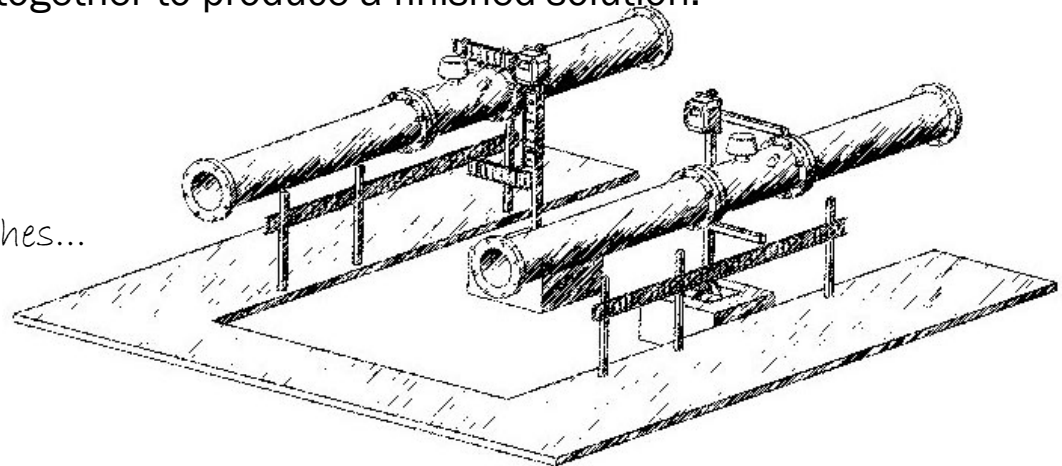
**17** years of **1993-2010**  
**Excellence**  
**Analytical Engineering Ltd**

# About us

---

- Analytical Engineering was founded and incorporated by Mark Citynskyj in December 1993. The objective being to supply both the petroleum industry and industry at large, with innovative instrumentation and control system products and services of the highest calibre.
- Mark is an Engineer. During his career he has been engaged in the design and integration of projects ranging from ultra-low power portable data loggers through to large system critical packages and steel construction.
- Over the last seventeen years the Company has been engaged on fiscal metering systems (mainly gas instrumentation packages) which include Danalyzer gas chromatographs deployed in hazardous onshore and offshore installations.
- Our work involves many engineering disciplines. Utilising the most suitable aspects from each, they are combined together to produce a finished solution.

*From our conceptual design sketches...*



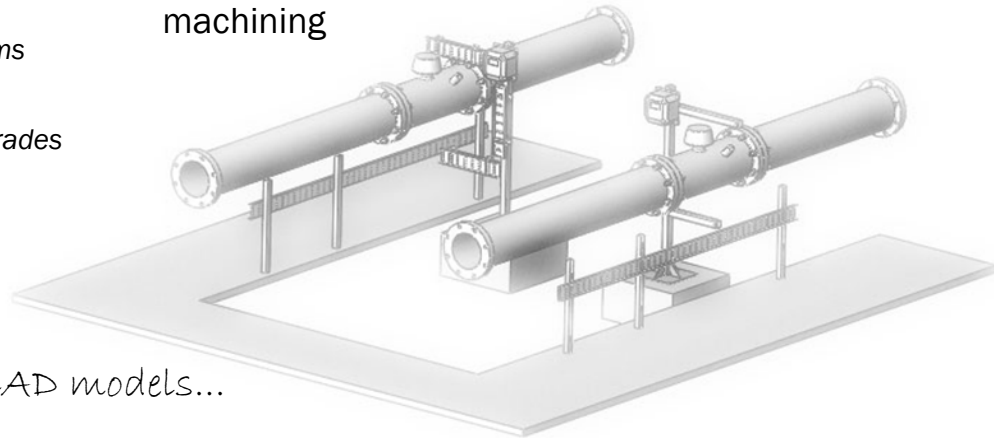
# Core business areas & transferable skills

---

- We supply 'turned key projects' from conceptual design through to finished systems. This includes detail design, approvals, fabrication, installation, electrical and instrumentation hook-up, commissioning and personnel training as required.
- Projects can involve ground works, steel erection, electrical and instrumentation systems depending on specific project scope of work and client requirements or simply a small modification to an existing instrument such as a Danalyzer.

## Single part or turned key systems include:

- Consultant Engineering Services
- Engineering Design  
*Including: mechanical, electrical, instrumentation, computer servers and networks, pneumatics, PLC control and automation systems and structural steel*
- Fiscal Flow Metering  
*Including: Danalyzer and flow computer systems*
- Danalyzer Modifications  
*Including: valve and complete instrument upgrades*
- 3D and 2D CAD
- Personnel Training
- Fabrication Services  
*Including: structural steel, electrical and instrumentation*
- System Installation and Hook-up, Integration and Commissioning
- Specific one-off or batch production part machining



... to 3D CAD models...

# Core business areas & transferable skills continued ...

- Transferable skills are a cornerstone of our business. An engineer at Analytical Engineering could be designing structural steel work one day, repairing a Danalyzer the next and programming a PLC the following.

## Instrument maintenance and repair for example Danalyzer gas chromatograph:

- Site fault investigation and repair
- Remote fault investigation and repair

*We supply the necessary test equipment, spares, tools and telephone/web support. The operator supplies site technician and a broadband Internet connection for our test system.*

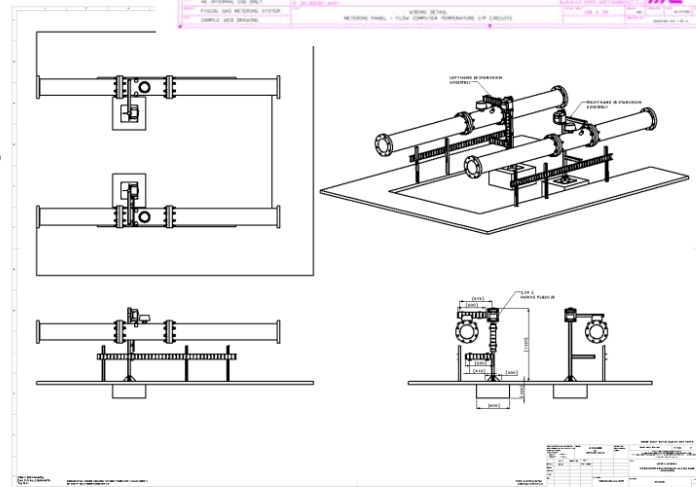
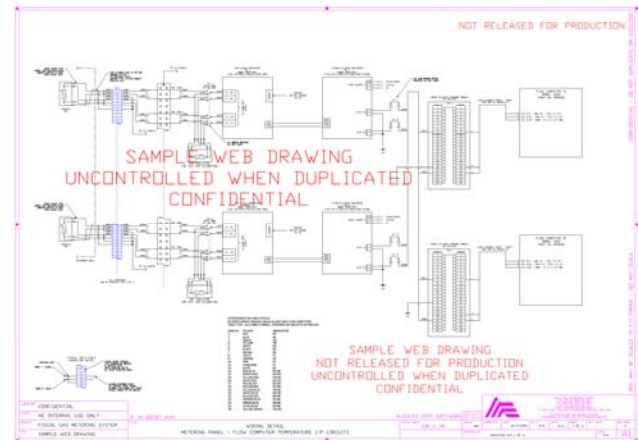
- Operator training

*Training courses tailored to specific requirements*

## Other business areas (design and manufacture):

- Raised access structural flooring systems
- Mezzanine flooring systems
- 41 mm channel bracket system
- Punch tooling and welding fixtures
- One-off parts and components

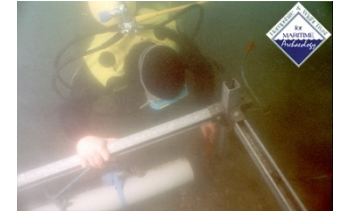
*... and finished 2D CAD drawings...*



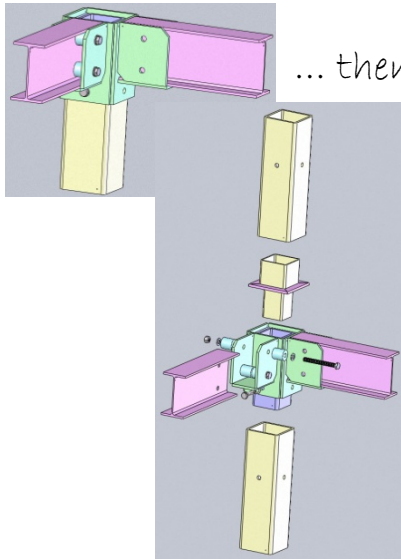
# Clients

- National Grid
- Wales and West Utilities
- Scotia Gas Networks
- United Utilities
- Thames Power
- Shell Exploration & Production
- Metco Services and SGS Redwood  
*Projects for Shell, BP, Amerada Hess & Mobil*
- BHP Billiton Petroleum

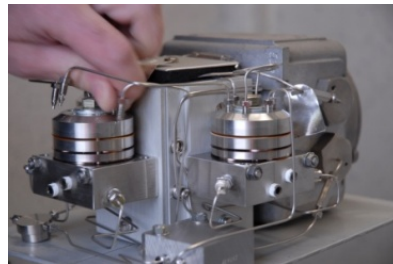
- The Hampshire and Wight Trust  
for Maritime Archaeology
- Powergen (Eon)
- GL Advantica
- Lifeform and A Vision of London  
*Project for SONY Corporation*
- Komori Currency Technology  
*Projects for Nigerian and Malaysian  
Governments*
- University of Oxford  
(Departments of Atmospheric Physics  
and Nuclear and Particle Physics)  
*Project for CERN Laboratories and  
Rutherford Appleton Laboratory*



41 mm Channel  
bracket system -  
sub-sea installation.



... then onward to construction.



Danalyzer gas chromatograph  
undergoing repair/upgrade.

3D CAD Mezzanine floor structure (conceptual design for client).



Low operating temperature anti-static,  
raised access flooring system - ATLAS  
Detector, Large Hadron Collider Project.

# Company mission statement

---

Our customers are always the priority.

Should we be working independently or jointly, in short, we are a Company consisting of engineering problem solvers. We think 'outside the box' to create innovative, cost effective solutions that are both 'value for money' for our client and 'sensitive to our environment'.

We will continue to invest in new technologies, new skills and new practices in our endeavours to ensure improved products and services.



Sunrise at Thornton Curtis, North East Lincolnshire, England.



Power & Light.  
Sunrise - Connah's  
Quay, Flintshire,  
North Wales.  
Eon (Powergen)  
power station.